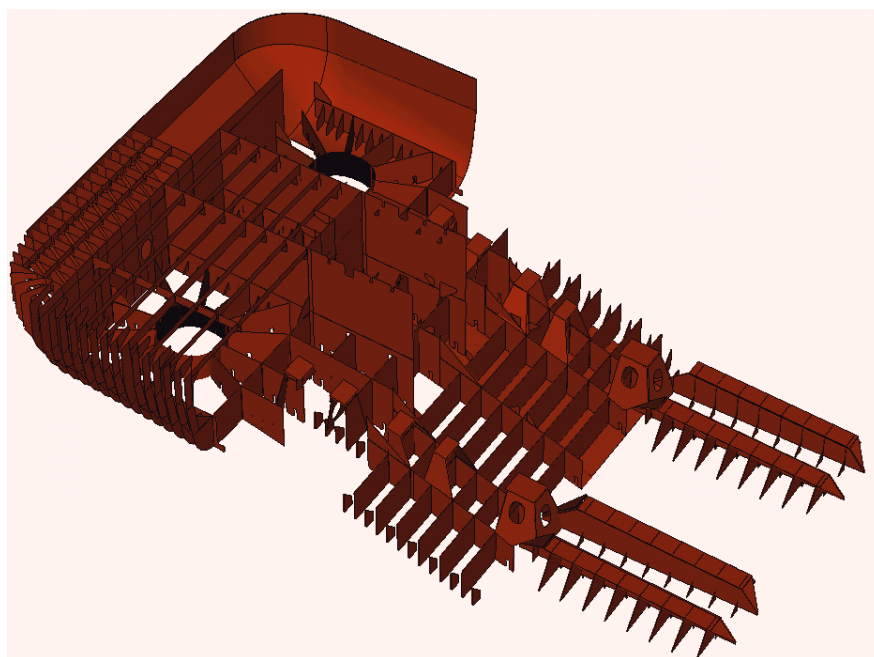
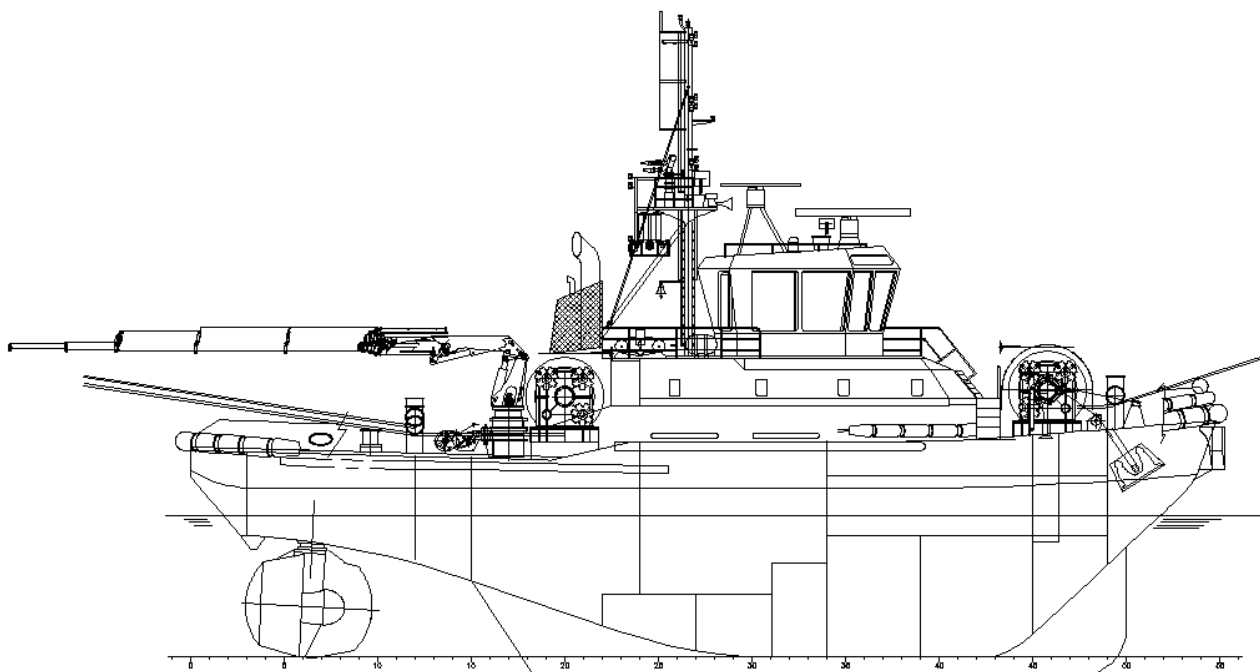




SELECTED REFERENCES

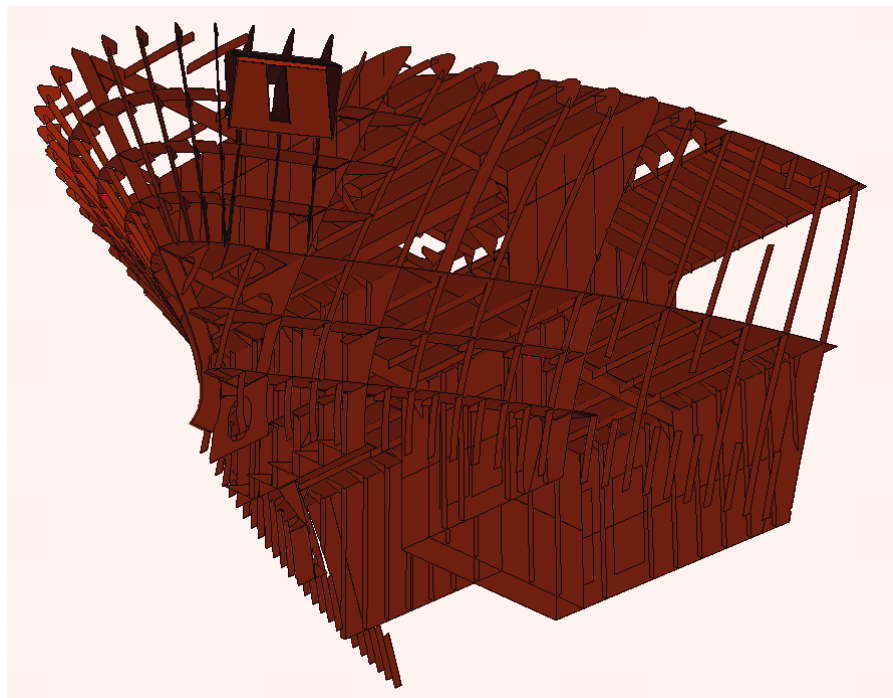
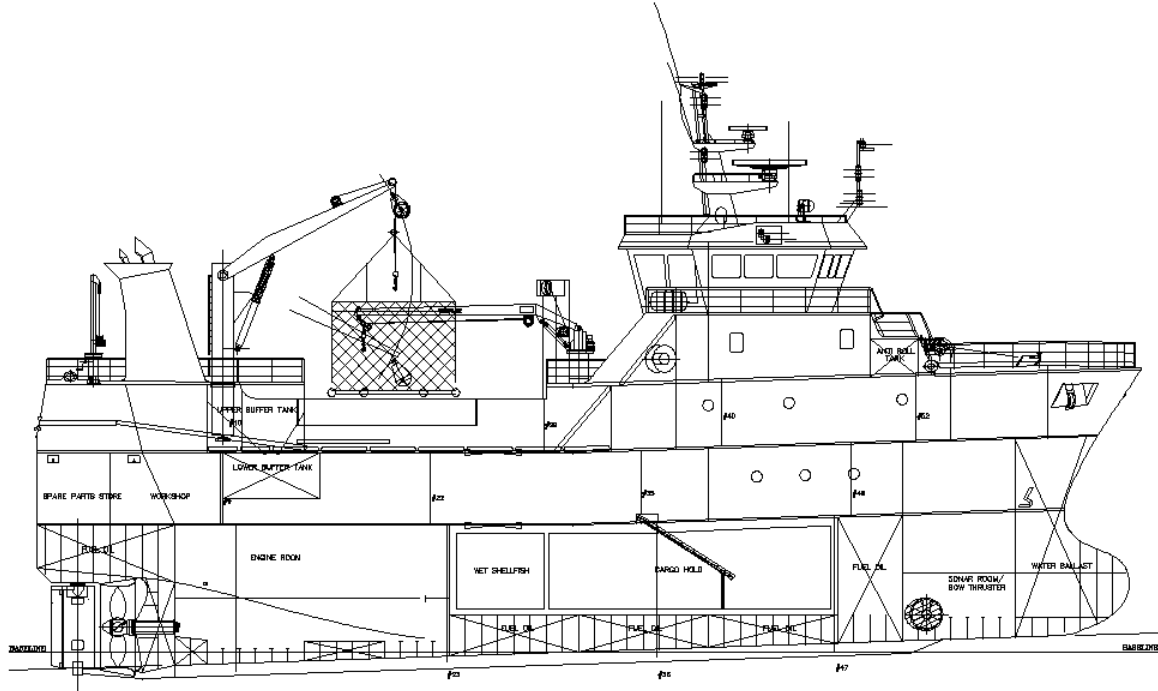


70 T ASD SCORT/HARBOUR TUG-ICE 1A

SHIPYARD: ARMON SHIPYARD, SPAIN
PROJECT: BEACON FINLAND LTD OY, FINLAND
DEFCAR'S COMMISSION: 3D Modelling of the Hull
Production Information
NC Programming



SELECTED REFERENCES

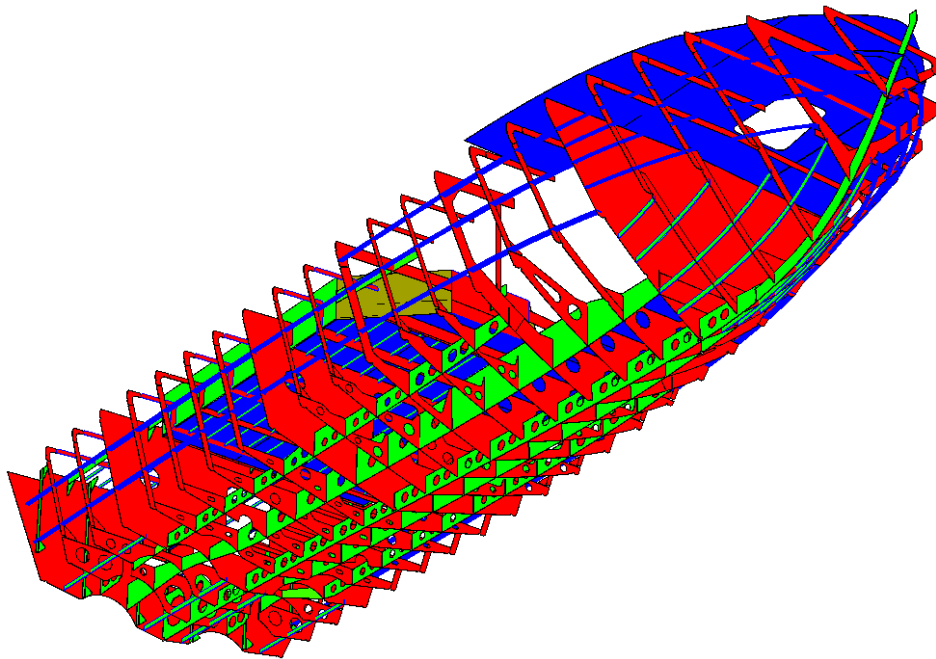
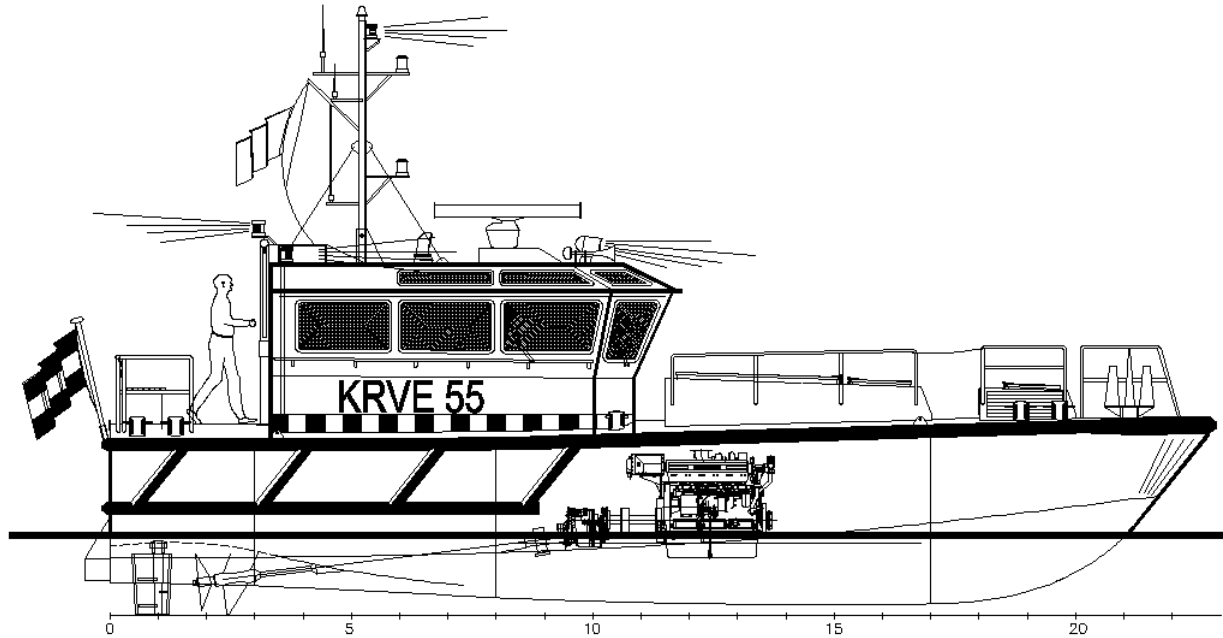


40.9 M SCALLOP DRAGGER

SHIPYARD: ARMON SHIPYARD, SPAIN
PROJECT: SKIPSTEKNISK A/S, NORWAY
DEF CAR'S COMMISSION: 3D Modelling of the Hull
Production Information
NC Programming



SELECTED REFERENCES

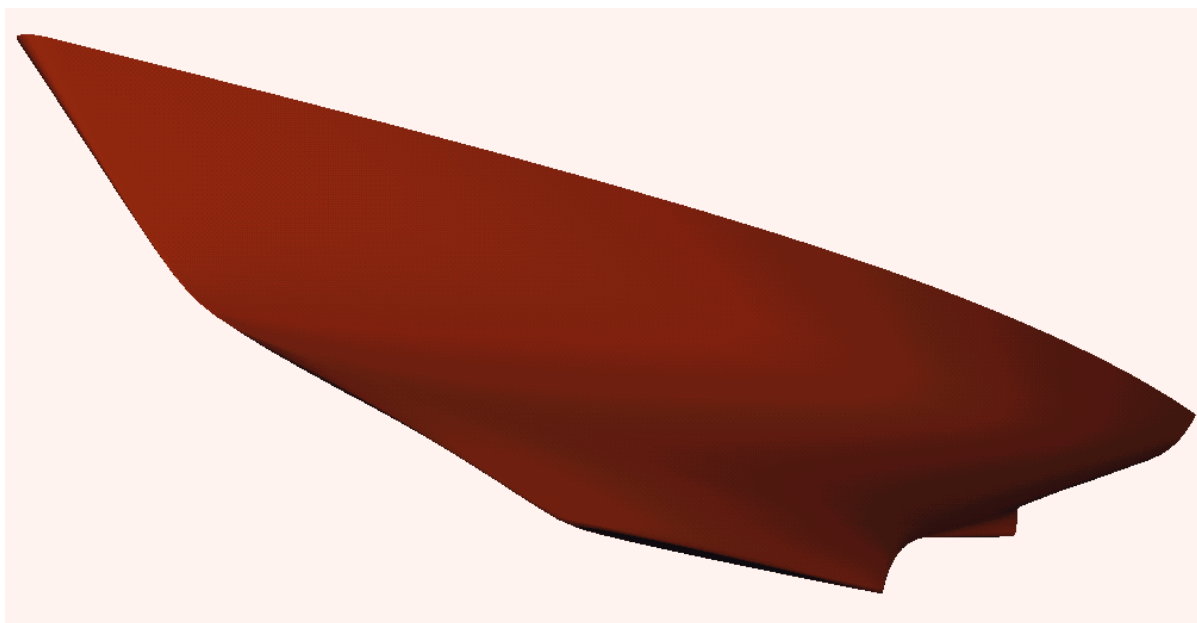
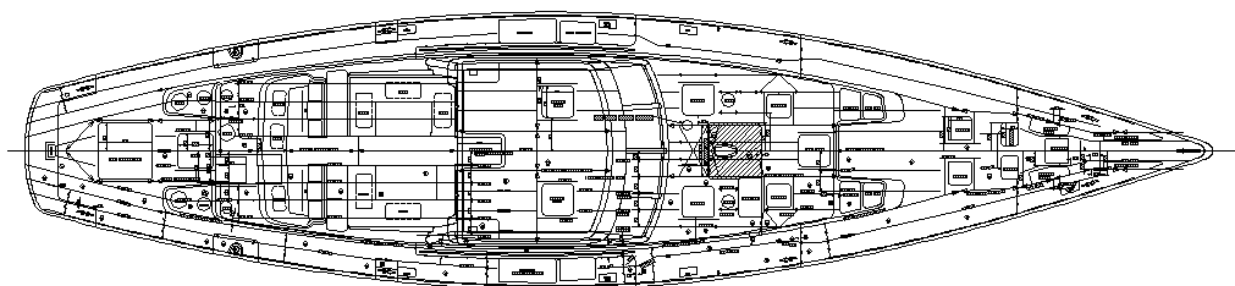


13.85 M PILOT BOAT

SHIPYARD: ENGELAER SCHEEPSBOUW, HOLLAND
PROJECT: SHIPYARD & A2S ENGINEERING, HOLLAND
DEFCAR'S COMMISSION: 3D Modelling of the Hull
Production Information
NC Programming



SELECTED REFERENCES

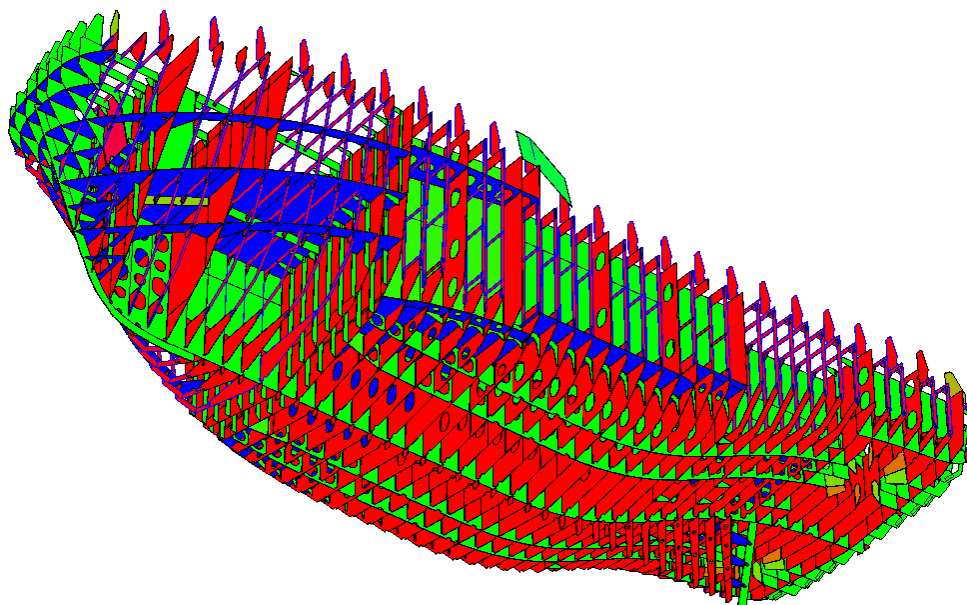
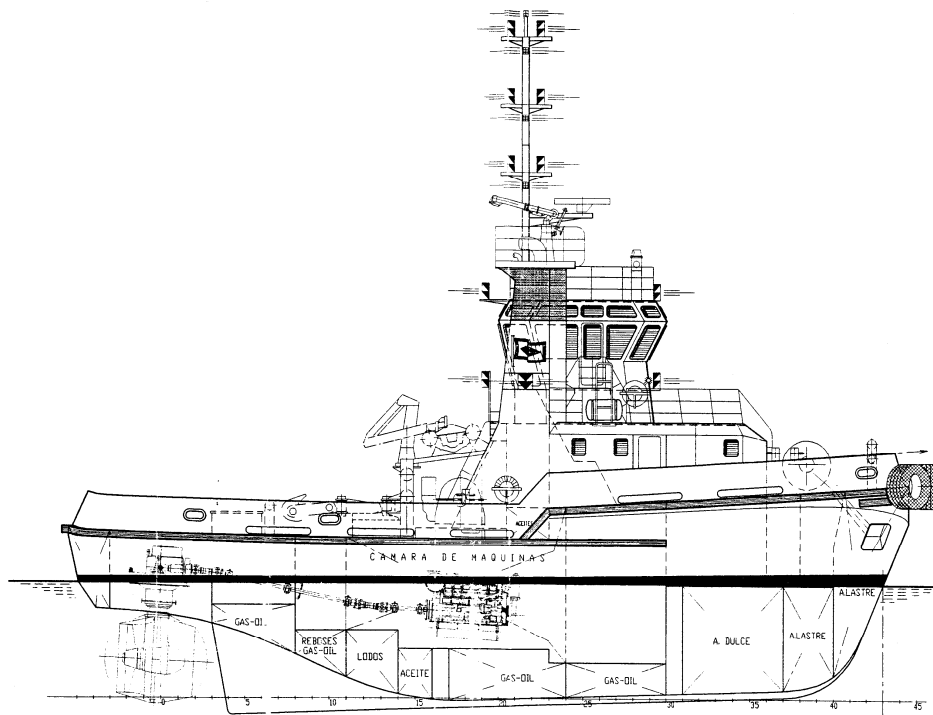


35 M SAILING YACHT

SHIPYARD: ENGELAER SCHEEPSBOUW, HOLLAND
PROJECT: SHIPYARD & A2S ENGINEERING, HOLLAND
DEFCAR'S COMMISSION: Hull Fairing
Shell Expansion



SELECTED REFERENCES

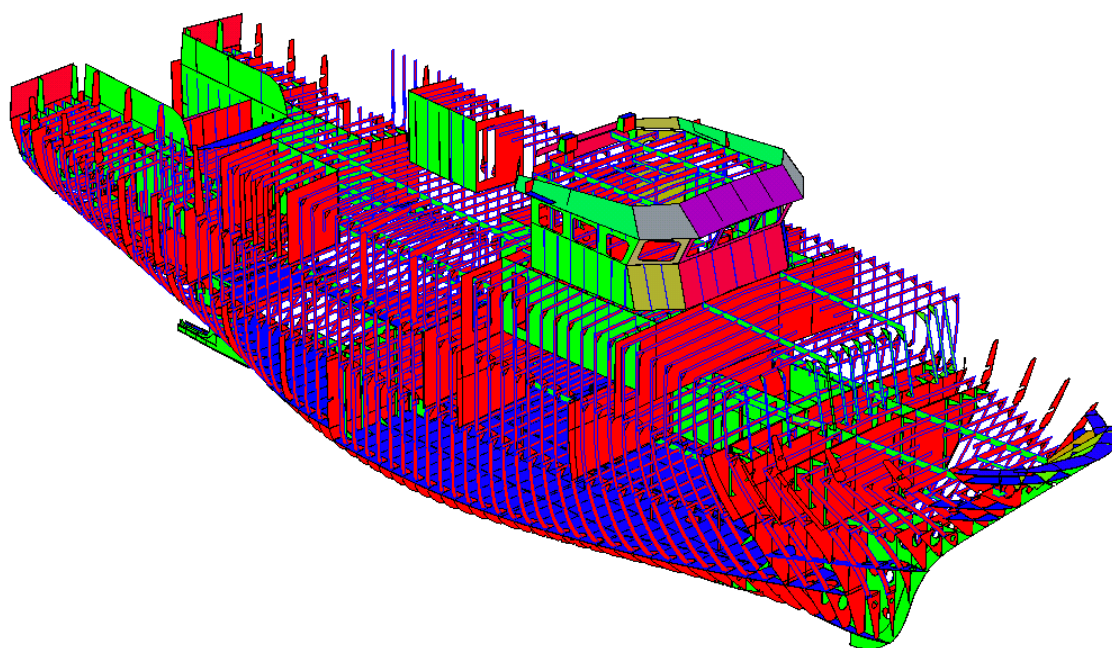
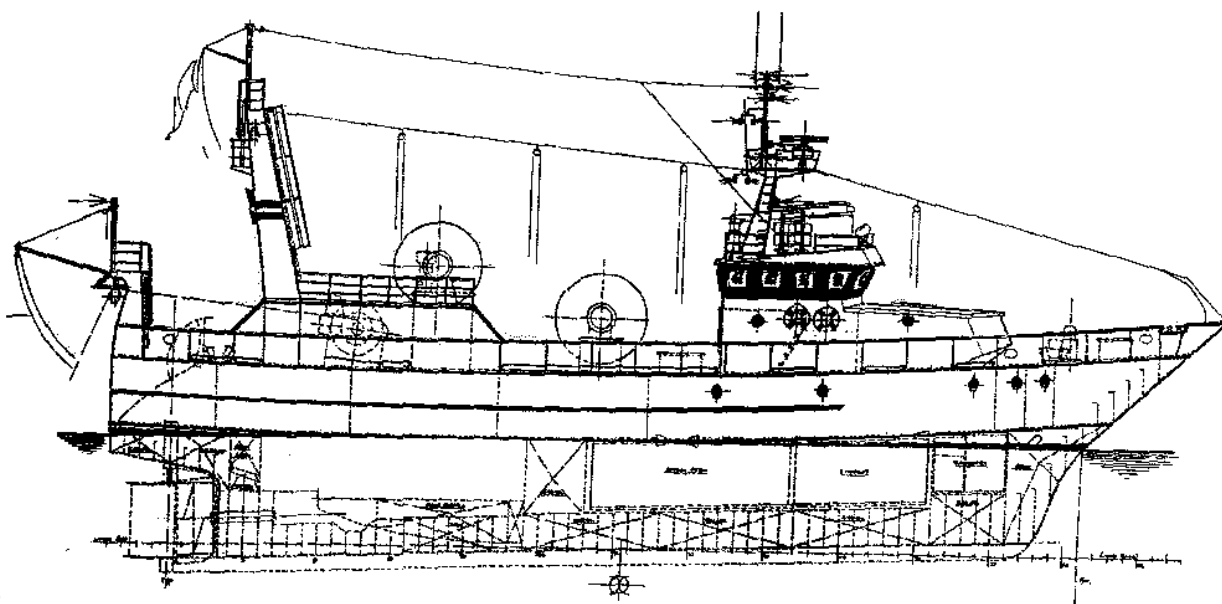


40 T PULL HARBOUR TUG

SHIPYARD: ASTILLEROS DE PASAIA, SPAIN
PROJECT: CINTRANAVAL, SPAIN
DEF CAR'S COMMISSION: 3D Modelling of the Hull
Production Information
NC Programming



SELECTED REFERENCES



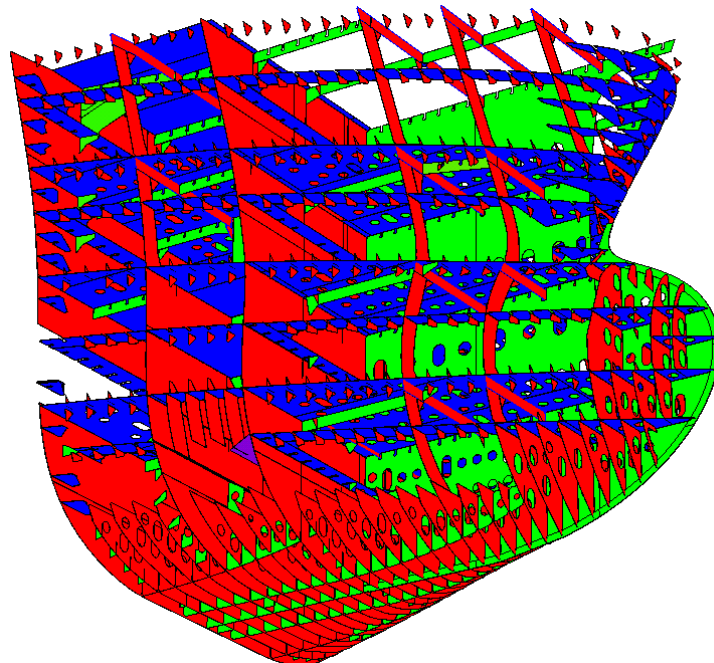
37 M STERN TRAWLER

SHIPYARD: ASTILLEROS DE PASAIA, SPAIN
PROJECT: FRANCISCO LASA, SPAIN
DEFCAR'S COMMISSION: 3D Modelling of the Hull
Production Information
NC Programming



SELECTED REFERENCES

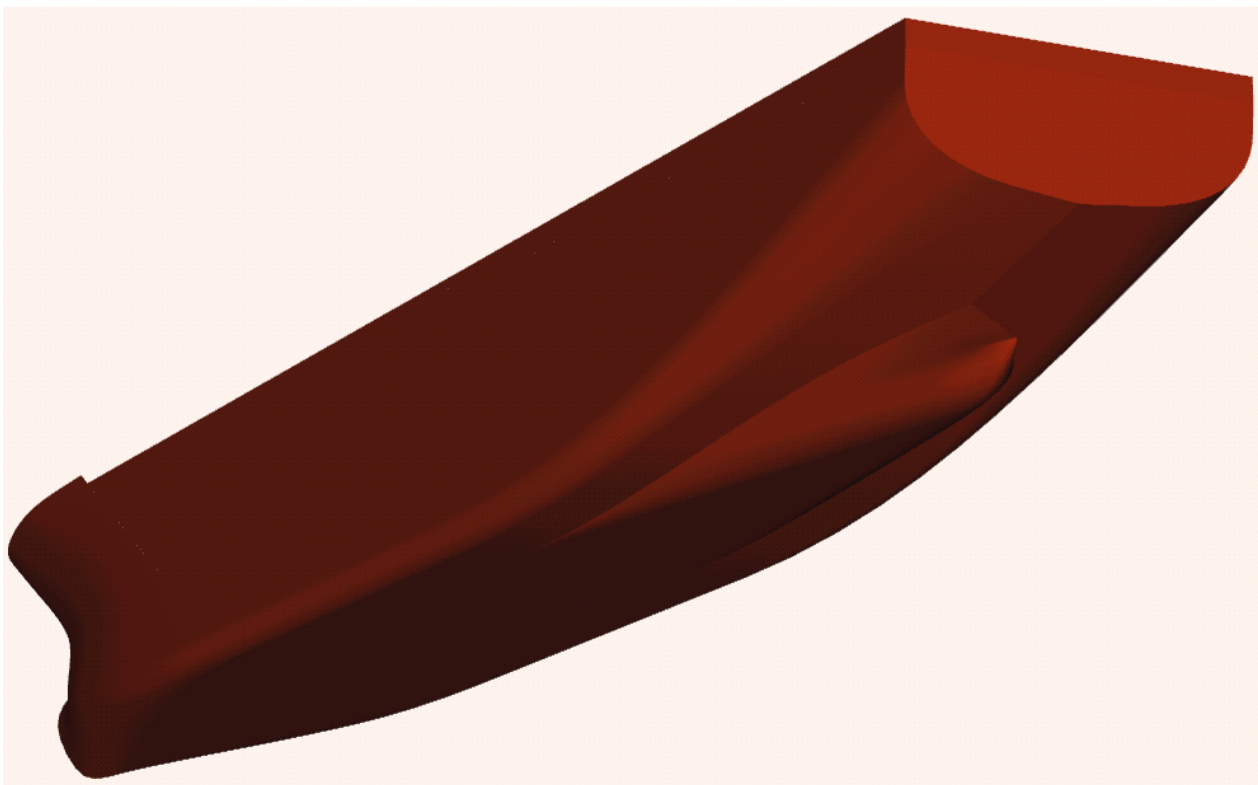
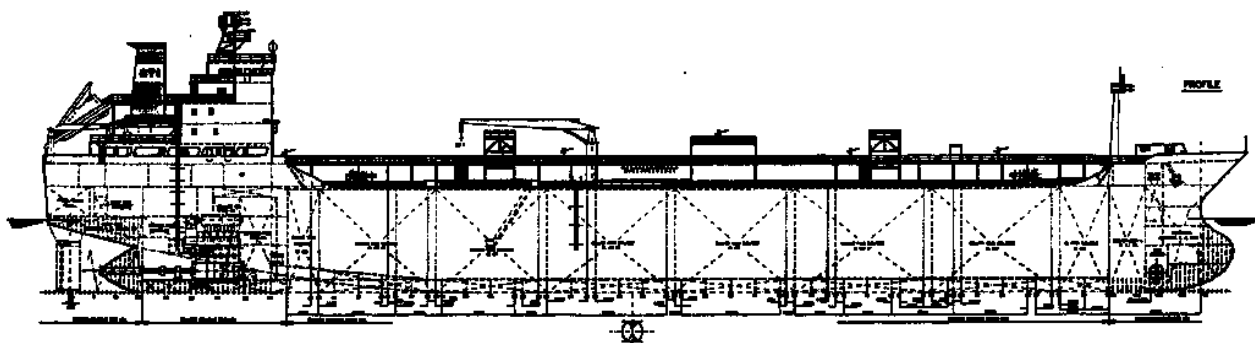
35000 DWT CHEMICAL CARRIER



SHIPYARD: NAVAL GIJON, SPAIN
PROJECT: SHIPYARD
DEFCAR'S COMMISSION: 3D Modelling of the Hull
Production Information
NC Programming



SELECTED REFERENCES



22000 DWT CHEMICAL CARRIER

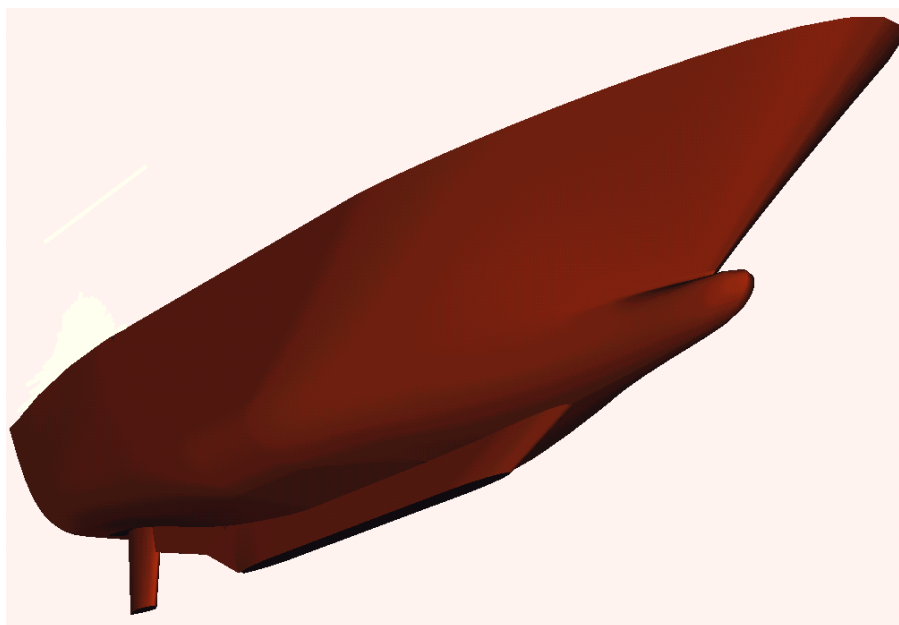
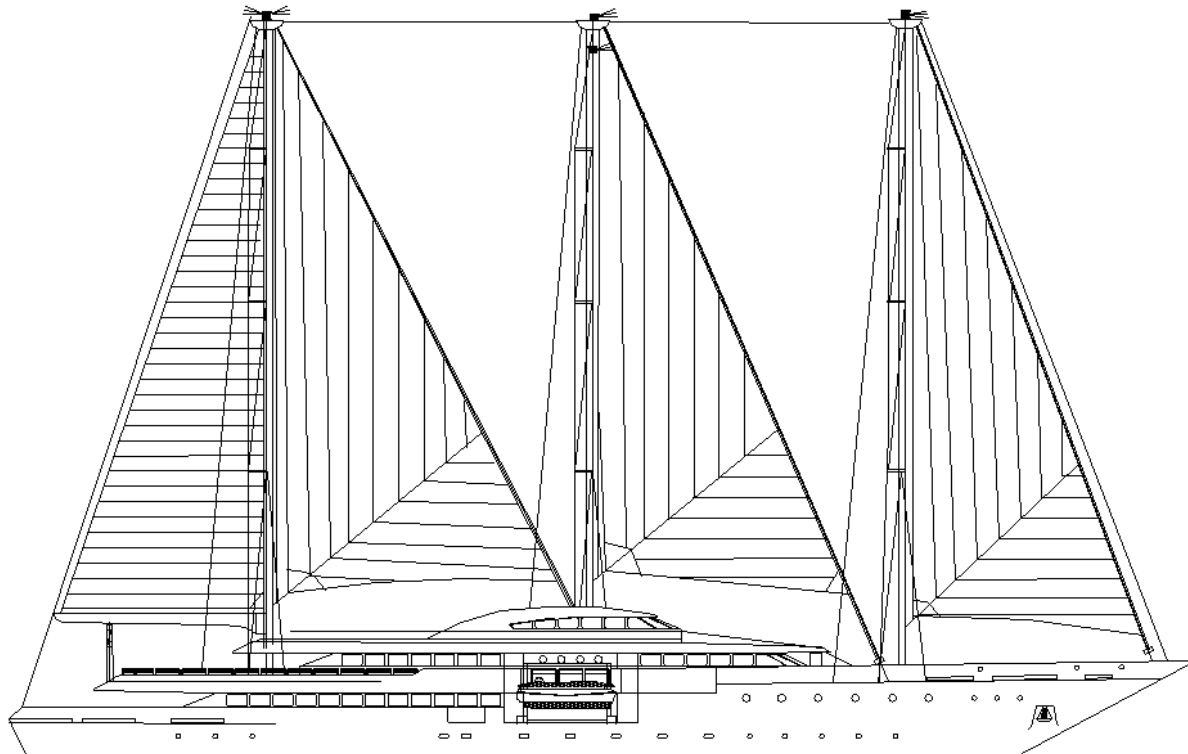
SHIPYARD: NAVAL GIJON, SPAIN

PROJECT: SHIPYARD

DEFCAR'S COMMISSION: 3D Modelling of the Hull
Production Information
NC Programming



SELECTED REFERENCES

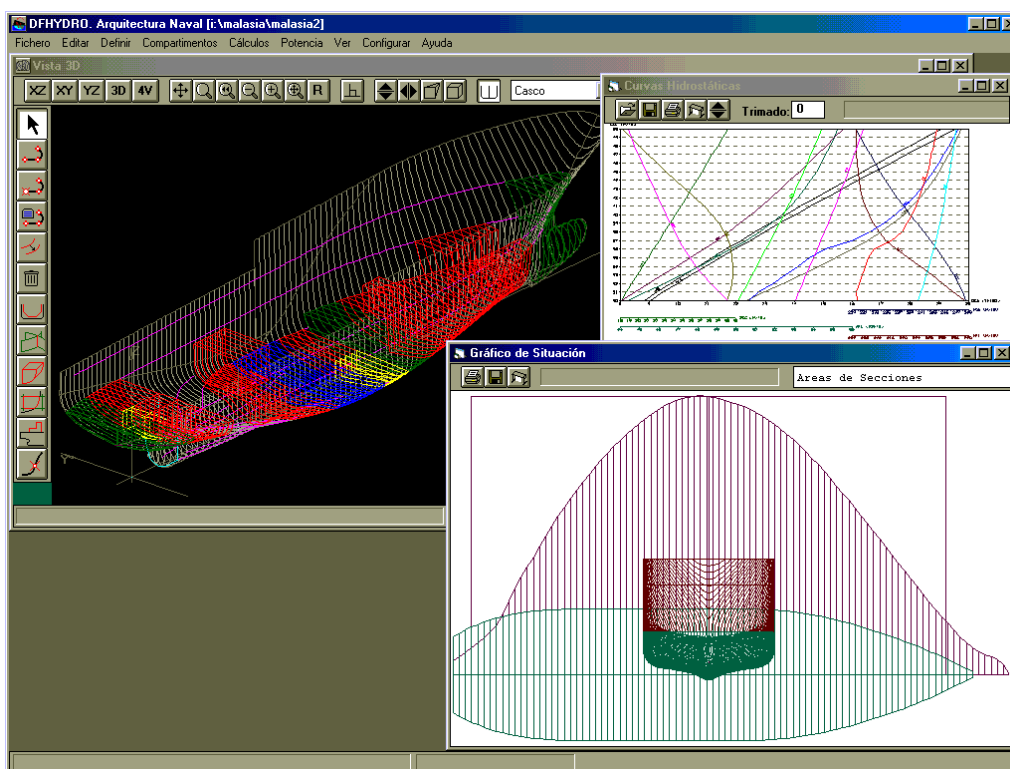
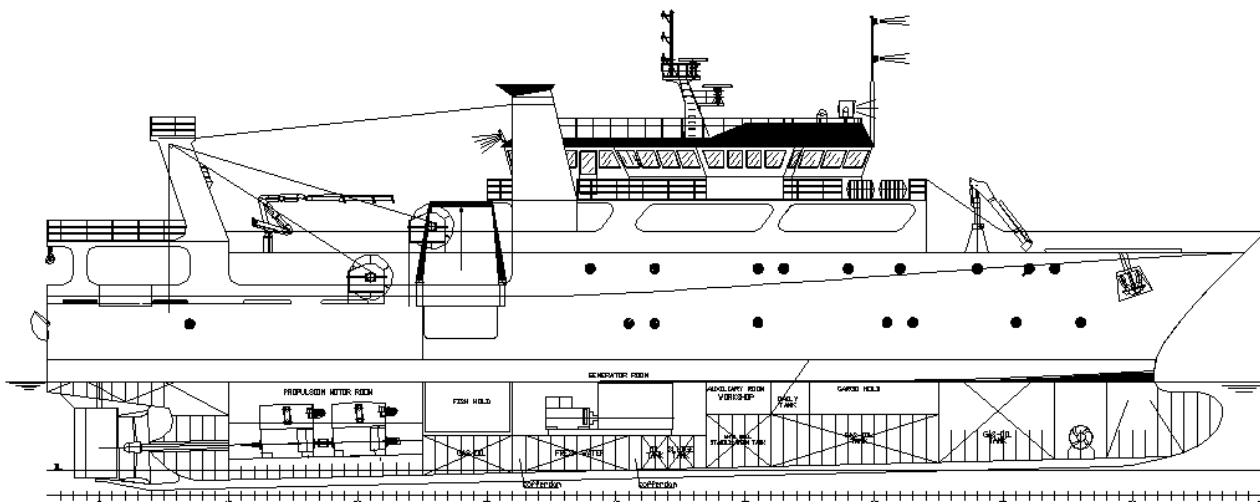


78.3 M SAILING YACHT

PROJECT: J. KOTSIOS NAVAL ARCHITECTURE, GREECE
DEF CAR'S COMMISSION: Hull Fairing



SELECTED REFERENCES

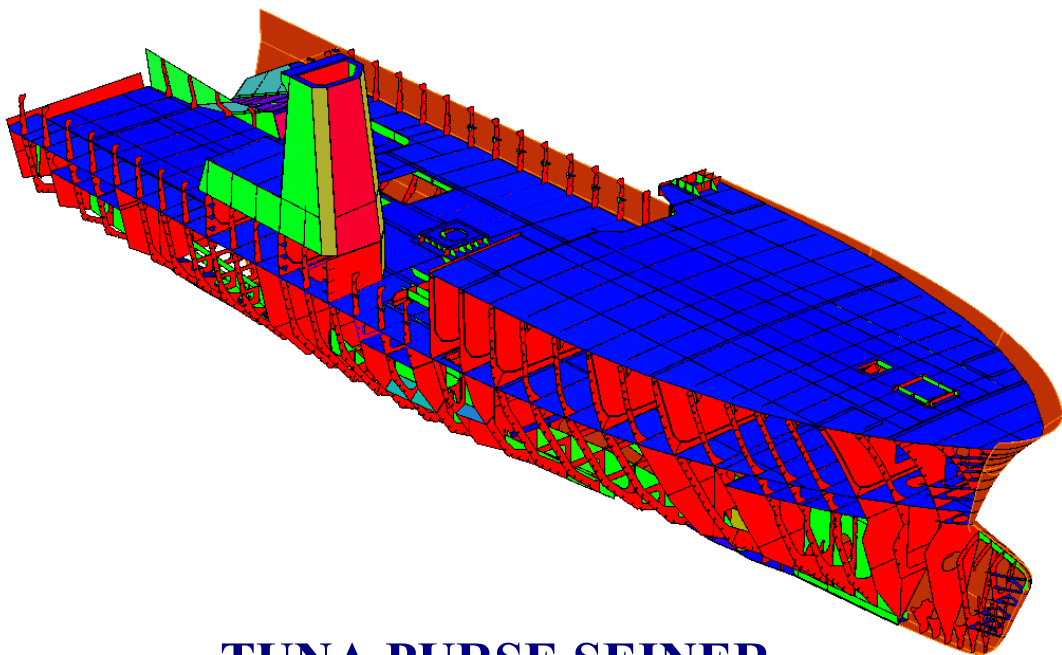
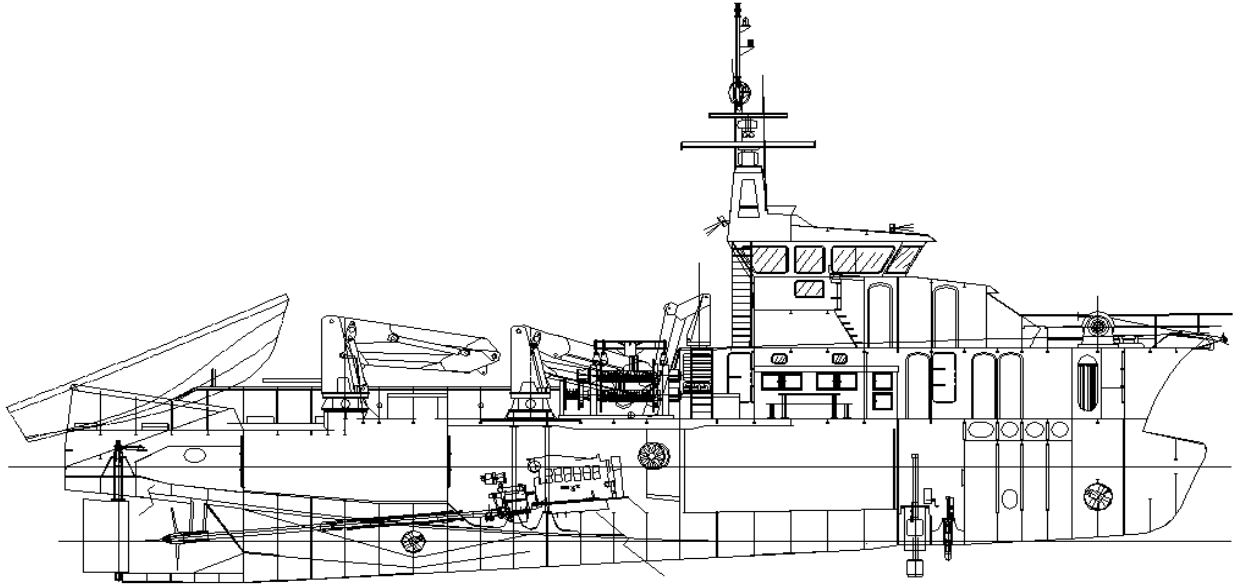


56 M FISHERIES RESEARCH VESSEL

SHIPYARD: SABAH SHIPYARD, MALAISIA
PROJECT: ISD & ASSOCIATES, MALAISIA
DEF CAR'S COMMISSION: Basic design



SELECTED REFERENCES



TUNA PURSE SEINER

SHIPYARD: ARMON SHIPYARD, SPAIN
PROJECT: BUREAU D'ETUDES MAURIC
DEFCAR'S COMMISSION: 3D Modelling of the Hull
Production Information
NC Programming